



**INSTRUCTIONS FOR:**  
**1942C – Geneva**

**Tools required:**

1. Screwdriver
2. Power Drill
3. Mixing bowl
4. Spirit Level
5. Durabond 90 or patching plaster
6. Fine sandpaper
7. Measuring tape

**READ INSTRUCTIONS THOROUGHLY PRIOR TO ATTEMPTING INSTALLATION. DRY FIT RECOMMENDED PRIOR TO APPLYING ADHESIVE**

**Step 1:**

Find the center of your fireplace opening and draw an 18” line vertically from the opening (Fig. 1.1). Be certain the line is plumb; check with spirit level.

**Step 2:**

Determine and mark the center of the mantel shelf (Fig. 1.2).

**Step 3:**

Stand unit in place aligning center line with line drawn in Step 1. Pre-drill 4 holes on inside members of mantel as shown in Fig. 1.3. Make sure to pre-drill at the thickest part of mantel (Fig. 1.4). Remove unit.

**Step 4:**

Install surround and/or hearth. For a firm looking installation apply a generous amount of Durabond 90 or patching plaster to the back edges of the mantel, and then push firmly back in place. Countersink 2 ½” screws in holes previously drilled. Clean off all excessive filler and let set for at least 24 hours.

Using filler, fill up any chips and screw holes. After it is sets, use fine sandpaper to make all surfaces smooth and ready for painting.

All Balmer gypsum fireplace mantels will accept lacquers, oil bases or acrylic paints. It is strongly recommended to prime first. Apply paints in thin coats to avoid filling up the intricate designs. For the finest results, use flat or satin finishes only.

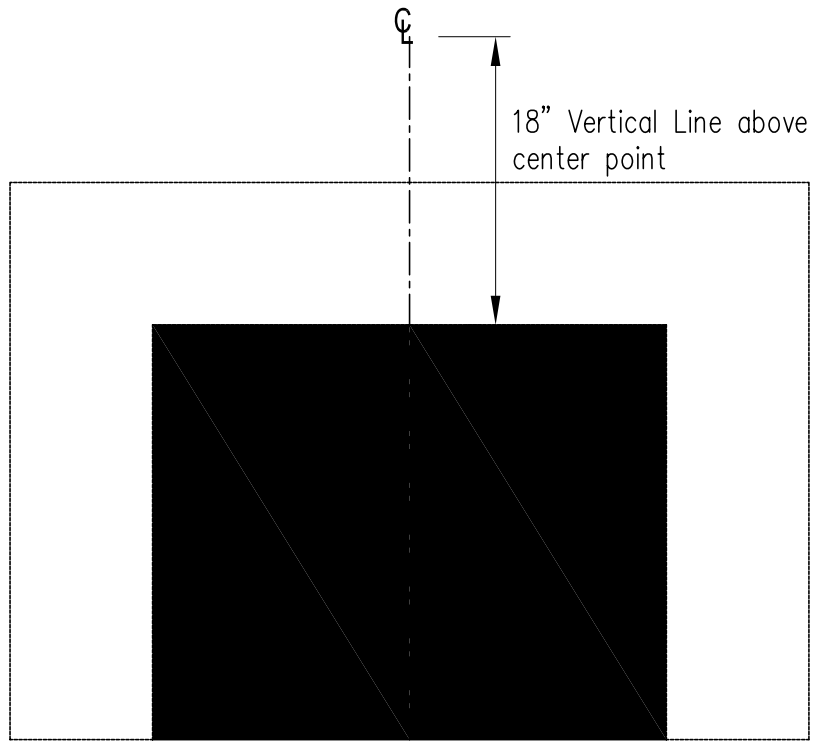


Fig. 1.1

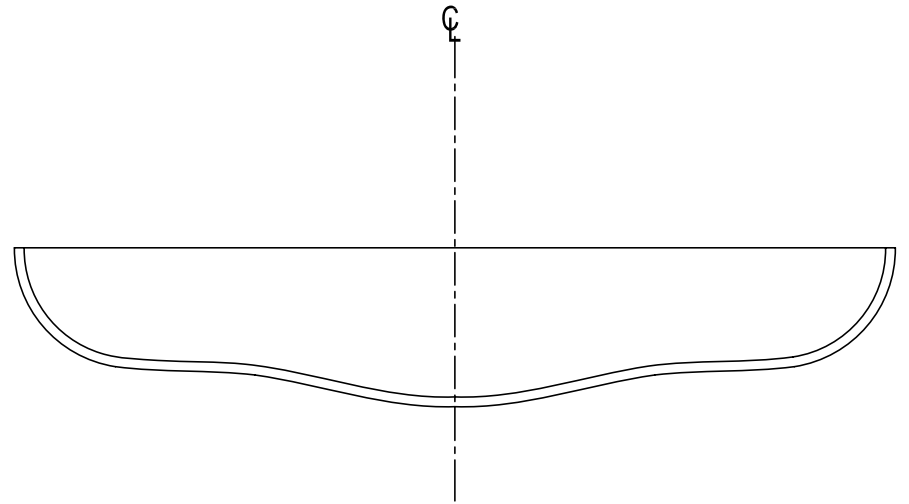


Fig. 1.2

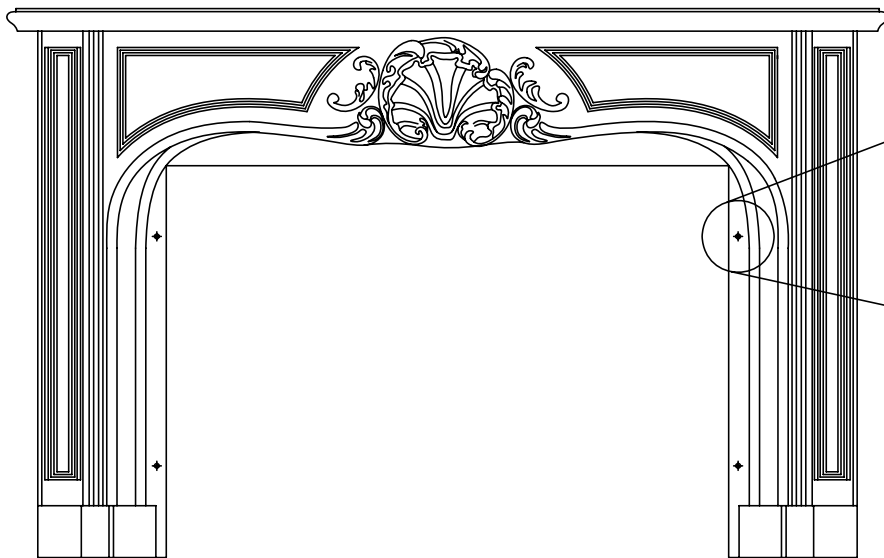


Fig. 1.3

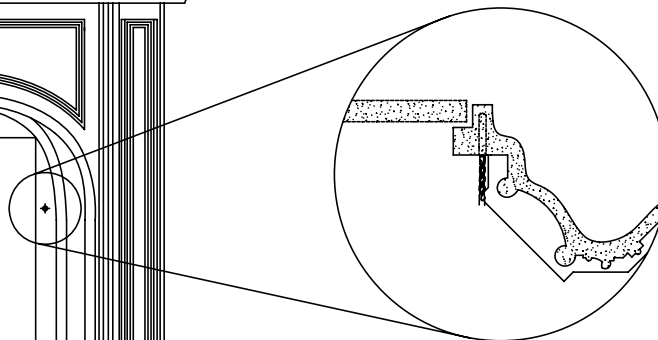


Fig. 1.4